

HDGF Antibody
Rabbit Polyclonal Antibody
Catalog # ALS16488**Specification**

HDGF Antibody - Product Information

Application	WB, IHC-P, E
Primary Accession	P51858
Reactivity	Human
Host	Rabbit
Clonality	Polyclonal
Calculated MW	27kDa KDa
Dilution	WB~~1:1000 IHC-P~~N/A E~~N/A

HDGF Antibody - Additional Information**Gene ID** 3068**Other Names**

Hepatoma-derived growth factor, HDGF, High mobility group protein 1-like 2, HMG-1L2, HDGF, HMG1L2

Target/Specificity

Human HDGF

Reconstitution & Storage

Long term: -20°C; Short term: +4°C. Avoid repeat freeze-thaw cycles.

Precautions

HDGF Antibody is for research use only and not for use in diagnostic or therapeutic procedures.

HDGF Antibody - Protein Information**Name** HDGF**Synonyms** HMG1L2**Function**

[Isoform 1]: Acts as a transcriptional repressor (PubMed:17974029). Has mitogenic activity for fibroblasts (PubMed:11751870, PubMed:26845719). Heparin-binding protein (PubMed:15491618).

Cellular Location

[Isoform 1]: Nucleus. Cytoplasm. Secreted, extracellular exosome. Note=Secreted by exosomes and is located inside the exosome (PubMed:27926477). May also be secreted as free protein via an as yet unknown pathway (PubMed:27926477) [Isoform 3]: Nucleus. Cytoplasm Secreted, extracellular exosome Note=Secreted by exosomes and is located on the outer exosome surface

Tissue Location

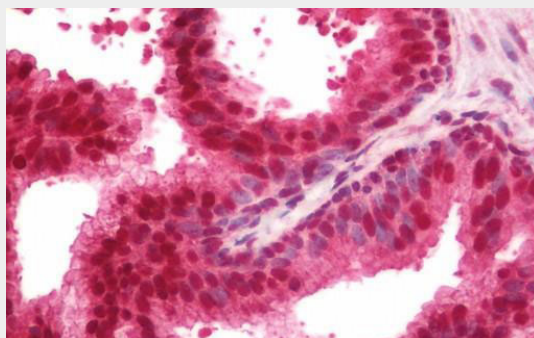
Ubiquitous..

HDGF Antibody - Protocols

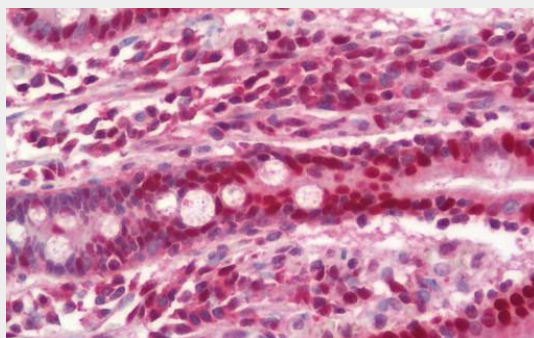
Provided below are standard protocols that you may find useful for product applications.

- [Western Blot](#)
- [Blocking Peptides](#)
- [Dot Blot](#)
- [Immunohistochemistry](#)
- [Immunofluorescence](#)
- [Immunoprecipitation](#)
- [Flow Cytometry](#)
- [Cell Culture](#)

HDGF Antibody - Images



Human Prostate: Formalin-Fixed, Paraffin-Embedded (FFPE)



Human Small Intestine: Formalin-Fixed, Paraffin-Embedded (FFPE)

HDGF Antibody - Background

Heparin-binding protein, with mitogenic activity for fibroblasts. Acts as a transcriptional repressor.